



## Salisbury Road, Walthamstow, London

Nestled on a sought-after street in the heart of Walthamstow Village is this charming two-bedroom ground floor Victorian garden flat.

Forming part of a handsome semi-detached Victorian residences this property offers a wonderful blend of character, style and outdoor space as well as a share of the freehold.

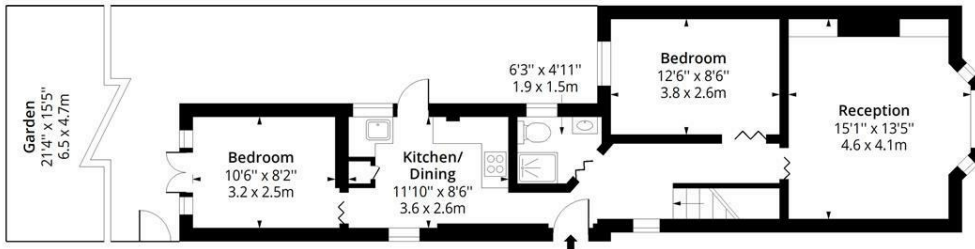
Accessed via a side passageway, the accommodation begins with an impressive bay-fronted reception room to the front of the property. Beautiful shutters enhance the large bay window, while a wood-burning stove creates a warm and inviting focal point.

The generous principal bedroom is positioned just beyond, followed by a stylishly presented shower room featuring a walk-in shower and contemporary wall and floor tiling. At the heart of the home is a well-appointed kitchen fitted with a range of white base and eye-level units, offering ample storage alongside space for dining. The kitchen also provides direct access to the rear garden.

To the rear of the property is a second bedroom, which benefits from its own doors opening directly onto the garden.

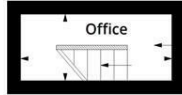
- Two Bedroom Ground Floor Flat
- Well Presented Throughout
- Walthamstow Village Location
- Walthamstow Central Station: 0.6 Miles
- Share Of Freehold
- Private Rear Garden
- Located On A Quite Residential Street
- 686 Sq Ft (63.73 Sq M)

£500,000



**Ground Floor**

Floor Area 631 Sq Ft - 58.62 Sq M



**Lower Ground Floor**

Floor Area 55 Sq Ft - 5.11 Sq M

Salisbury Road E17



Approx. Gross Internal Area  
686 Sq Ft - 63.73 Sq M



Measured according to RICS IPMS2. Floor plan is for illustrative purposes only and is not to scale. Every attempt has been made to ensure the accuracy of the floor plan shown, however all measurements, fixtures, fittings and data shown are an approximate interpretation for illustrative purposes only. 1 sq m = 10.76 sq feet.

lpaplus.com

